

# BRIDGNORTH LIVESTOCK MARKET

## WEEKLY REPORT – 27.02.24



### WASHING OUT VEHICLES/TRAILERS

Please note that you **MUST WASH OUT** your vehicle/trailer after unloading at this market. **IF YOU DO NOT WASH OUT** your vehicle you **MUST** fill out an "Undertaking to Cleanse and Disinfect Vehicle" FMAW27 Form which are available from the Market Office.

### 66 PRIME CATTLE

**Auctioneer – Mark Burgoyne 07831 192603**

Depleted numbers this morning as feeders continue to be on top of their cattle. Generally, a more commercial show with more dairy bred and heavier sorts forward. Best handy weight sorts met a sharp trade with wholesaling cattle also sought after. Bulls were a very mixed bag and saw a slightly easier trade.

Only a small show of mainly heavier type steers sold to a top of 282p/kg or £2140 in the lump.

Fewer 300p/kg heifers in evidence, saw a top of 348p/kg with £1965 top priced female per head.

Very few suckler bulls penned today saw a top of 276p/kg or £1971 in the lump. Dairy bred bulls were not the best and sold to 216p/kg.

### 54 CLEAN CATTLE

#### 8 STEERS SOLD TO OV AV 266P/KG

Mrs B had red Limmies today selling to 282p/kg for 734kg, with her heavy 770kg steer to £2140.60. Dave Whiteman sold his tidy British Blue cross to 269p/kg for 758kg or £2039.02 in the lump. 814kg Limousin crosses from Sam Jones stacked up well at £2018.72.

#### 46 HEIFERS SOLD TO OV AV 278P/KG

The usual quality kit from Harvey Parkes stole the limelight at 348p/kg for 502kg, with others to 325p/kg, 316p/kg and 312p/kg. A shapey, black Limmie from Evan Watkin sailed to 333p/kg with heavy red Lims from Richard Skellern to £1964.80 for 614kg. Peter Hartley sold his Blue heifers to 312p/kg for 522kg.

#### 12 BULLS SOLD TO OV AV 229P/KG

A cracking Limousin cross from Ben Rochelle sold to 276p/kg for 714kg (£1970.64), with shapey 556kg dairy bulls to 266p/kg from Lee Preece. Charlie Lloyd's Limousin cross sold to 263p/kg for 570kg. Montbeliards sold to 216p/kg for 632kg again from the Lloyd stable.

**GOOD ENTRIES OF CLEAN, BULLS AND CULL COWS  
REQUIRED NEXT WEEK PLEASE**

### AFU CATTLE VENDORS PLEASE NOTE:

Could producers selling in the Red Market from Approved Finishing Units (AFU) please provide a copy of your licence (TB24h) for our records. This is a requirement of our licencing with the Veterinary Inspectorate.

### STEERS P/KG AND £/HEAD

282p/kg	£2069	734kg	22m	LIMx	C Burgoyne
278p/kg	£2140	770kg	25m	LIMx	C Burgoyne
272p/kg	£1931	710kg	22m	LIMx	C Burgoyne
269p/kg	£2039	758kg	27m	BRB	BV & DT Whiteman
269p/kg	£1850	688kg	27m	BRB	BV & DT Whiteman
264p/kg	£1731	656kg	25m	BRB	BV & DT Whiteman
249p/kg	£1648	662kg	30m	LIMx	WJ Jones & Co
248p/kg	£2018	814kg	23m	LIMx	WJ Jones & Co

### HEIFERS P/KG AND £/HEAD

348p/kg	£1746	502kg	21m	LIMx	EP Parkes & Sons
333p/kg	£1824	548kg	21m	LIMx	E Watkin
325p/kg	£1683	518kg	17m	LIMx	EP Parkes & Sons
320p/kg	£1964	614kg	21m	LIMx	RJ Skellern
316p/kg	£1668	528kg	20m	LIMx	EP Parkes & Sons
312p/kg	£1734	556kg	18m	BRB	EP Parkes & Sons
312p/kg	£1834	588kg	22m	LIMx	C Burgoyne
312p/kg	£1628	522kg	12m	BRB	JL Hartley & Son
310p/kg	£1872	604kg	25m	LIMx	C Burgoyne
309p/kg	£1507	488kg	12m	BRB	JL Hartley & Son
304p/kg	£1684	554kg	20m	LIMx	EP Parkes & Sons
294p/kg	£1840	626kg	21m	LIMx	RJ Skellern
292p/kg	£1874	642kg	22m	LIMx	C Burgoyne
292p/kg	£1851	634kg	25m	LIMx	C Burgoyne
287p/kg	£1848	644kg	22m	LIMx	JD Williams & Son

### BULL P/KG AND £/HEAD

276p/kg	£1970	714kg	19m	LIMx	R&B Rochelle
266p/kg	£1478	556kg	23m	BRB	M Preece & Co
263p/kg	£1499	570kg	14m	LIMx	SB Lloyd & Son
251p/kg	£1681	670kg	16m	BAX	A Preece & Son
239p/kg	£1347	564kg	22m	BRB	M Preece & Co
216p/kg	£1365	632kg	14m	MONT	SB Lloyd & Son

### IMPORTANT NOTICE TO ALL SHEEP VENDORS:

- Please ensure all sheep are tagged in the approved manner before arrival to the auction
- Lamé or unsound sheep will NOT be accepted and will be returned to the vendor
- All sheep presented in Bridgnorth are deemed to be fit for human consumption, free from imperfections and have completed any veterinary medicine withdrawal



Livestock & Auction Centre, Tasley, Bridgnorth, Shropshire, WV16 4QR

T: 01746 762 666 | F: 01746 767 475

E: enquiries@nockdeighton.co.uk | www.nockdeightonagricultural.co.uk

Regulated by RICS

### 1345 PRIME HOGGS

**Auctioneer – Martin Clack 07977 067519**

The most remarkable trade, averaging 363.5p/kg for the entire yard of sheep and selling to over 400p/kg on five occasions to 406p/kg for 45kg Beltex from Pete Morris and heavier hogs no less per kilo selling to £193.05 for 58.5kg.

53.5kg hogs to £192 (360p/kg) from Richard Morgan, 46.5kg to 395p/kg from Pete Morris, with trade accelerating throughout the sale.

Hogs under 40kg mixed in quality selling to 373p/kg for 39kg from Roger Burgoyne and 32kg to 349p/kg from Roddy Yapp.

More hogs required for next week. Take advantage of the extremely high values available.

#### Top Prices to 45kg

406p/kg	45.0kg	IGC Morris
403p/kg	43.0kg	R & T Cantrill
403p/kg	41.0kg	R & T Cantrill
403p/kg	41.0kg	R & T Cantrill
400p/kg	42.5kg	R & T Cantrill
398p/kg	40.0kg	S & A Perkins
397p/kg	41.5kg	D & C Evans
394p/kg	40.0kg	LH Dalton & Son

#### Top Prices 45kg – 50kg

395p/kg	46.5kg	IGC Morris
391p/kg	46.0kg	N Kinsey
382p/kg	46.5kg	GN Duppa
374p/kg	47.5kg	N Kinsey
374p/kg	46.0kg	JM Williams & Son

#### Top Prices over 50kg

360p/kg	53.5kg	LR Morgan & Son
338p/kg	55.0kg	LH Dalton & Son
335p/kg	52.5kg	S & A Perkins
334p/kg	55.0kg	KL Howells
334p/kg	53.0kg	DJ Bradley

#### Top Prices/Head

£193.05	58.5kg	JM Williams & Son
£192.60	53.5kg	LR Morgan & Son
£191.30	58.5kg	WH Meredith
£189.90	57.0kg	DJ Bradley
£185.90	55.0kg	LH Dalton & Son
£184.40	51.5kg	S Moss



### 910 EWES

**Auctioneer – Ollie Clack 07891 343673**

A very similar trade to last week with a market average of £122.60.

Best Continental ewes possibly easier to last week's exceptional trade, selling to £247 for Texels, £240 for Charollais and £200 for small but very shapely Beltex. Suffolk x Mule ewes sold to £180 and Welsh Country Mules were a brisk trade selling to £135 and North Country Mules to £130.

Large, lean ewes just as dear with Continental ewes most sought after. Hill ewes sold to £80 for small Speckles, £116 for Cheviots and £85 for improved Welsh. Small Welsh ewes £50 and rams lacking in quality sold to £149.

Six goats sold to £120 for yearlings and £120 for older nannies.

#### Top Prices £/Head

£247.00	Texel	A Oliver
£240.00	Texel	C Lloyd
£240.00	Texel	M Preece & Co
£230.00	Texel	A Powers
£220.00	Texel	LR Morgan & Son
£212.00	Texel	AG Kirton & Son
£200.00	Texel	P Turbin
£200.00	Texel	S Moss

#### SHEEP VENDORS PLEASE NOTE:

Following a visit by Shropshire Trading Standards a range of tagging issues has been identified. Even though Nock Deighton Agricultural staff will read non-EID ear tags and our vendor printouts represent 100% accuracy, it is a requirement to have all sheep tagged and compliant with current legislation BEFORE unloading in the auction.

**ALL SHEEP MUST BE TAGGED WITH ELECTRONIC TAGS**

### **NEXT STORE SALE THIS FRIDAY 1<sup>st</sup> MARCH 2024**

Entries to date include:

100 STORE CATTLE  
(including quality Limousin suckler bred feeding bulls)

100 STORE HOGGETS

*Further entries anticipated*

*Catalogues on-line and Facebook*

*Take advantage of the trade at the moment!*

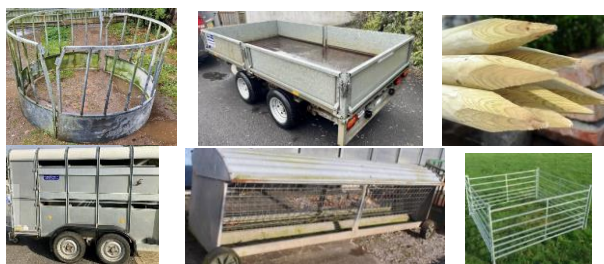
**Contact: Mark Burgoyne 07831 192603  
Martin Clack 07977 067519  
or Ollie Clack 07891 343673**



## COLLECTIVE MACHINERY SALE

To be held at the Livestock Market, Bridgnorth

**SATURDAY 23<sup>rd</sup> MARCH 2024**



Entry forms available in the office or on the website – closing date for the catalogue is **FRIDAY 8<sup>th</sup> MARCH**

Send in your entries and email photographs to [reception@nockdeighton.co.uk](mailto:reception@nockdeighton.co.uk)

**Contact: Dylan Ward on 07415 815266 or  
Ollie Clack on 07891 343673**

## SUSTAINABLE FARMING INCENTIVE (SFI)

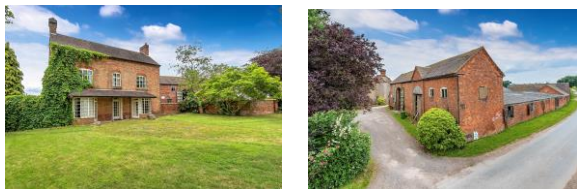
- Three year Schemes for Environmental Land Management Options
- Payments made quarterly
- Capital items are available under the Capital Only Scheme



Contact James Neame or Camilla Whitehouse on 01746 762666 for advice and to book an appointment

## FOR SALE

**THE HOPE, DUNSTON HEATH  
STAFFORD, ST18 9AQ**



### Opportunity for Developers

- Grand period traditional farmhouse in need of refurbishment with large gardens
- Outstanding range of brick-built farm buildings with timber beams throughout
- Planning permission obtained - 02/00367/COU
- To be sold as a whole or in two lots

**OFFERS CIRCA £1,150,000 FOR THE WHOLE OR  
LOT 1 OFFERS BASED ON £600,000 AND  
LOT 2 OFFERS BASED ON £550,000**

## FOR SALE

**DEVELOPMENT OR SELF-BUILD OPPORTUNITY FOR  
TWO PLOTS, CLUDDLEY, WELLINGTON, TF6 5DR**



**Opportunity to build energy conscious homes in a semi-rural location. Full planning has been granted**

- Plot size over half an acre per plot
- Bespoke design based on sustainable Passivhaus
- Near to the market town of Wellington and the Wrekin

**GUIDE PRICE: CIRCA £420,000 FOR THE WHOLE or  
£210,000 PER PLOT**

## FOR SALE

**BLAENYTHAN, PANTEG CROSS  
LLANDYSUYL, CEREDIGION, SA443 4SS**



**An excellent opportunity to purchase an agricultural holding with large farmhouse and development opportunity**

- Former dairy farm within a ring fence
- Approximately 94.85 acres (38.38 ha) of versatile and grazing land
- Development potential
- South facing land with stunning far-reaching views
- Large farm house with huge potential
- Mixture of traditional and modern farm buildings

**FOR SALE BY PRIVATE TREATY  
Offers in the region of £1,695,000**

## FOR SALE

### LOWER LLEGODIG, ABERMULE SY15 6JY



**An excellent opportunity to acquire a smallholding with potential for renovation/modernisation**

- Detached, four-bed, farmhouse with exposed beams and slate/tiled floors
- Requires refurbishment following a flood in 2022
- 7.7 acres (3.11 hectares) of land in total including outbuildings, stock-fenced pasture with access

**GUIDE PRICE: £400,000**

## TO LET

### COMMERCIAL BUILDING 8,000 SQ FT, CLAVERLEY WV5 7EE

- An excellent opportunity to rent a large building in a rural location
- Planning to use B8 (storage/distribution)
- Good quality building in secure farmyard
- Multiple access points with roller shutter doors
- Potential to split into two separate units
- Office space available by separate negotiation
- To be let on a Business Lease under the Landlord & Tenant Act 1954

**GUIDE PRICE: £4,000 PER CALENDAR MONTH**

## TO LET

### AGRICULTURAL/GENERAL STORAGE BADGER HEATH FARM, WV6 7JU

**485m<sup>2</sup> / 5218ft<sup>2</sup>**

- Former grain storage building
- Concrete portal-frame building
- Located on a working farm approximately two miles off the A454
- Convenient location and good access
- Parking for approximately 10 cars
- Connected to mains electricity only, water connection can be made

**GUIDE PRICE: £15,000 PER ANNUM**

## LAND FOR SALE

### SOUTH WEST OF STABLEFORD BRIDGE, BADGER LANE, STABLEFORD, BRIDGNORTH



#### 59.18 ACRES LAND

- Approximately 59.18 acres (23.94 hectares) of arable, pasture land and river meadow
- Attractive river meadow land adjacent to the River Worfe
- Potential for lake creation (subject to planning)
- Potential for environmental management/ carbon offsetting
- Approximately 1.5 miles of single bank fishing on the River Worfe
- Productive pastures provide excellent grazing while the river meadow areas also provide opportunity for environmental management schemes

For Sale by Private Treaty As a whole or may divide into lots

## LAND FOR SALE

### DANESFORD, BRIDGNORTH WV15 6QD

#### 10.97 ACRES EQUINE OR AMENITY LAND



- Level pasture fields
- Pasture land with hard standing parking area
- Convenient location and good access off A442
- Field shelter and stable available by separate negotiation
- Fishing rights available by separate negotiation

For Sale by Private Treaty  
**OFFERS OVER £260,000**



## AMC - Providing Certainty in Uncertain Times

The degeneration of the BPS scheme, combined interest rates rising so quickly and the unprecedented levels of volatility in both commodity prices and input costs, means that forecasting future cashflow is perhaps more difficult than at any other point in recent memory - something which is clearly at the forefront of many farmers' minds.

Such uncertainty is leading to many businesses consolidating by using any surplus cash to reduce debt, rather than investing for the future. For those who do not have the means for debt reduction or are looking to align themselves to take advantage of whatever opportunities emerge from such uncertainty, now may be an appropriate time to review the structure of existing long-term finances to ensure that the business is more resilient, whatever the future may hold.

When considering finance in such a way the rule of thumb is always the same, to borrow over as long as possible (to minimise monthly outgoings) and then to repay as quickly as possible (to minimise the total interest paid to the lender).

Following this principle means that cashflow is not unnecessarily committed to existing loan repayments such that not only can any leaner years be managed more comfortably but capacity remains to service further debt in order to take advantage of unexpected opportunities, such as buying neighbouring land.

When borrowing from AMC, loans can be available for up to 30 years and, when borrowing on a variable rate of interest, the borrower is at liberty to make additional capital repayments at any point in time, hence businesses can borrow over a very long term but then repay much sooner, if cashflow allows.

Opportunities to buy neighbouring land rarely present themselves at the right time and hence AMC's unique ability to offer long-term interest-only funding also allows such opportunities to be taken more with more confidence, while still servicing other commitments.

For more information regarding how reviewing your business finances may be beneficial, speak to Rob McCabe in full confidence on (office) **01746 762666** or (mobile) **07970 981183**

## ANTIQUES & COLLECTABLES AUCTIONS


For over 50 years Nock Deighton Agricultural LLP (NDA) have been holding twice-monthly auctions of antiques, collectables and household furniture. The average lots per auction are in excess of 800 up to 1000, giving a good depth and spread of interest to all who take part. Lots can go for as little as £1 for a mixed box or as much as £3,000 for a specialist item – such as the Regency wrought-iron pad-footed garden bench (below) - which sold following some intense bidding from buyers online and in the sale room.



Dylan Ward and the Auction Team offer a complete service, including house clearances, appraisals, valuations and advice on the best route of sale. Post-sale we can offer post and packing to UK destinations for smaller light items.

Dylan oversees the categorising and lotting of the diverse items we receive, they are then arranged in the sales room, labelled with the owner's sticker, photographed and finally briefly described for the [easyliveAuction.com](https://www.easyliveauction.com) on-line system.

For the future, Dylan has ambitious ideas in bringing the auction experience closer to interested sellers and buyers with presentation, personal service and respectful handling of auction lots. Auctions can be exciting, especially when bidding is intense. We are seeing many new customers using the on-line system for the first time and being delighted with what they have bought and the service provided by our staff. It is our intention to make the whole experience easy and enjoyable for both buyers and sellers alike.

Sales are now catalogued with a full pictorial version displayed online, with internet bidding, as well as bidding in the saleroom. The new Facebook  page is available by searching for **Nock Deighton Antique & Collectable Auctions** and this shows a selection of lots for forthcoming sales.

**For all Saleroom enquires please contact Dylan Ward**

**07415 815266 or 01746 762666**

or email [antiques@nockdeighton.co.uk](mailto:antiques@nockdeighton.co.uk)

The next Furniture/Antiques Sale will be held on  
**Wednesday 6<sup>th</sup> March 2024**  
**Sale starts at 10.00am**

The auction will be held on-line at  
[www.easyliveauction.com](https://www.easyliveauction.com)  
or attend in person  
at the Sale Room in Bridgnorth

**Viewing days - Monday 4<sup>th</sup> and  
Tuesday 5<sup>th</sup> March 2024**